

STANDARD DEPARTURE CHART  
INSTRUMENT(SID) - ICAO

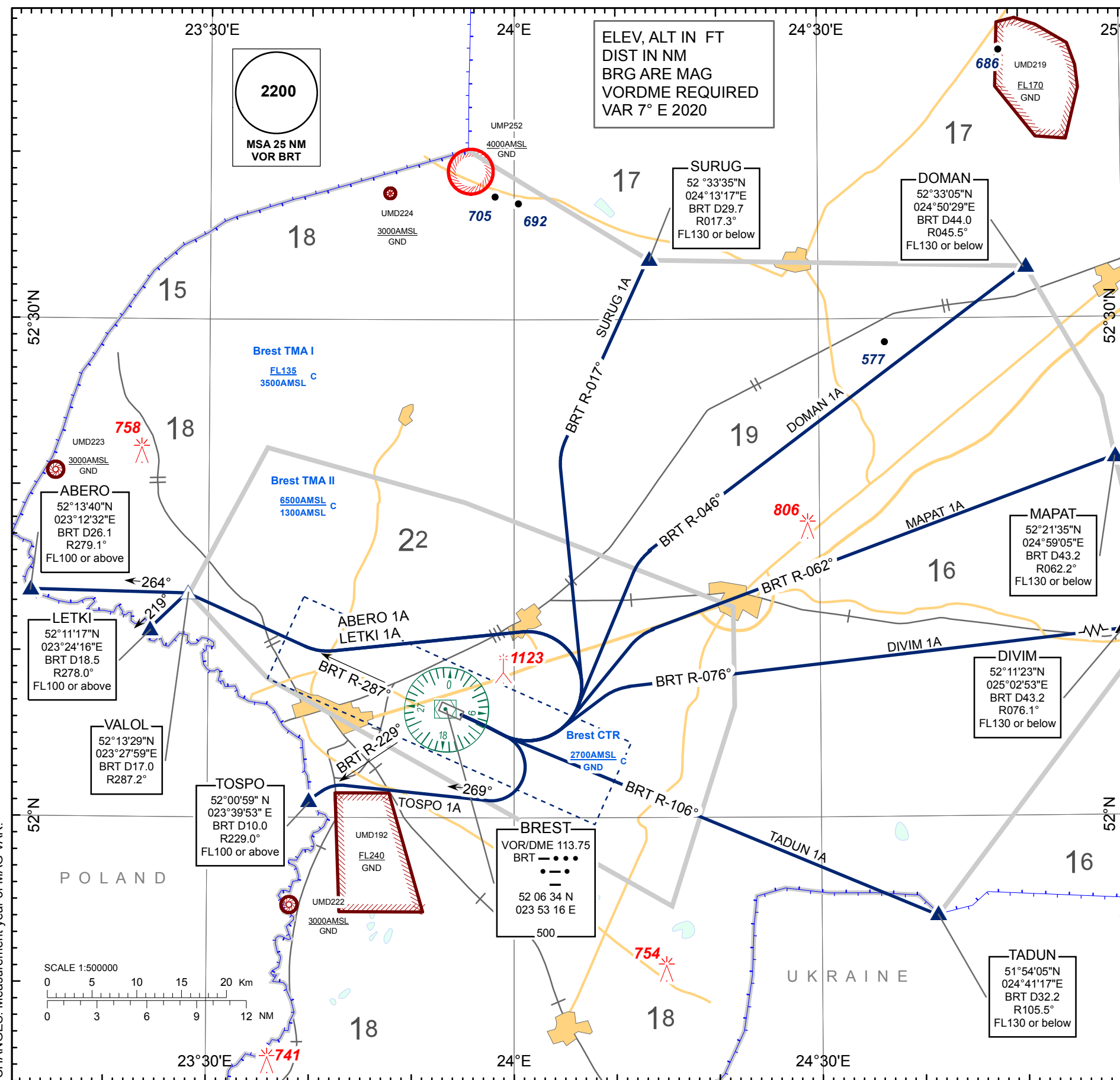
TRANSITION ALTITUDE  
6000

Alt set: - hPa (mm on req)  
- QNH (QFE on req)

BREST  
RWY11

TWR 127.700  
MET 136.525 (EN)  
118.225 (RUS)

ABERO 1A, DIVIM 1A, DOMAN 1A  
LETKI 1A, MAPAT 1A, SURUG 1A  
TADUN 1A, TOSPO 1A



STANDARD INSTRUMENT DEPARTURE (SID) ROUTES BREST RWY 11	
SID NAME	ROUTE
<b>ABERO 1A</b>	<b>ABERO ONE ALFA</b> Climb straight ahead to 1100 (646) or above, turn LEFT 257° track to intercept BRT VOR R-287° to VALOL, turn LEFT on track 264° and proceed to ABERO.
<b>DIVIM 1A</b>	<b>DIVIM ONE ALFA</b> Climb straight ahead to 1100 (646) or above, turn LEFT 046° track to intercept BRT VOR R-076° and proceed to DIVIM.
<b>DOMAN 1A</b>	<b>DOMAN ONE ALFA</b> Climb straight ahead to 1100 (646) or above, turn LEFT 016° track to intercept BRT VOR R-046° and proceed to DOMAN.
<b>LETKI 1A</b>	<b>LETKI ONE ALFA</b> Climb straight ahead to 1100 (646) or above, turn LEFT 257° track to intercept BRT VOR R-287° to VALOL, turn LEFT on track 219° and proceed to LETKI.
<b>MAPAT 1A</b>	<b>MAPAT ONE ALFA</b> Climb straight ahead to 1100 (646) or above, turn LEFT 032° track to intercept BRT VOR R-062° and proceed to MAPAT.
<b>SURUG 1A</b>	<b>SURUG ONE ALFA</b> Climb straight ahead to 1100 (646) or above, turn LEFT 347° track to intercept BRT VOR R-017° and proceed to SURUG.
<b>TADUN 1A</b>	<b>TADUN ONE ALFA</b> Climb straight ahead to 1100 (646) or above, turn LEFT to intercept BRT VOR R-106° and proceed to TADUN.
<b>TOSPO 1A</b>	<b>TOSPO ONE ALFA</b> Climb straight ahead to 1100 (646) or above, turn RIGHT (MAX IAS 220kt and bank 20°) 269° track to intercept BRT VOR R-229° and proceed to TOSPO.

THIS PAGE INTENTIONALLY LEFT BLANK